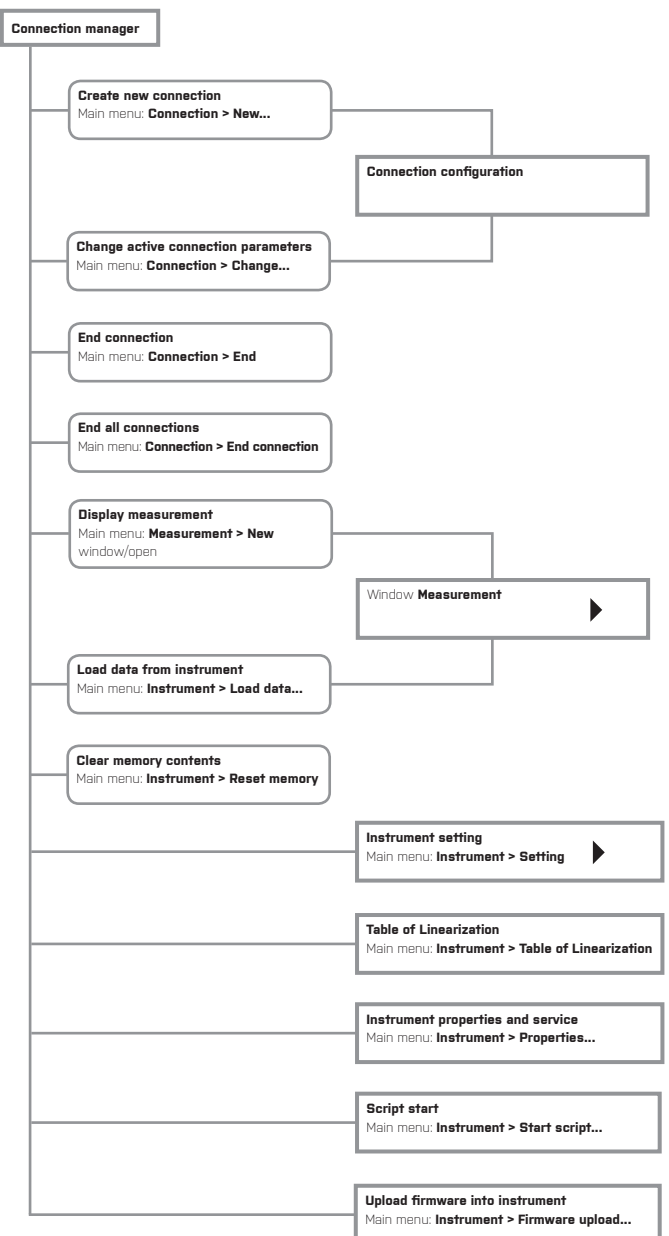
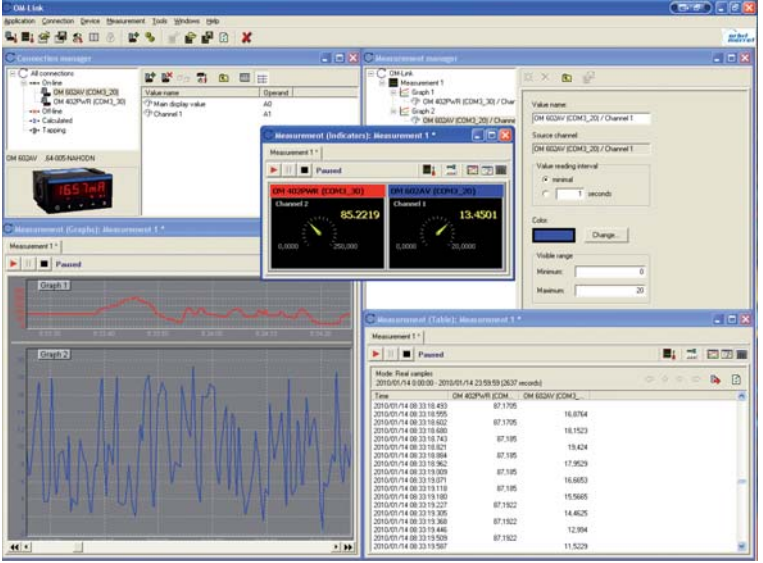


The program OM Link is designed for easy configuration, operation, firm-ware upgrade of instruments and converters and for visualization of the measuring process. The new ORBIT MERRET instruments include the OM Link interface in their standard features. To connect to PC an OML cable is required (version USB or RS232).

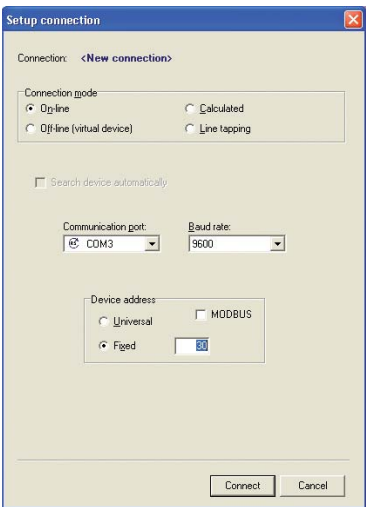
The program may be used for configuration (1 instrument) or data collection via RS 232 and RS 485 line, more suitable for on-line connection during operation.



## CONNECTION MANAGER

Connection manager facilitates creating and cancelling connections, provides their list classified as per Type, noting the basic parameters and measurable values (channels), and serves as home location for starting measurements, configuring the OM instruments, projecting their properties etc.

Connection is the key entity of the OM link application - it represents physical or virtual connection with an OM device and is the basic subject of many application functions.

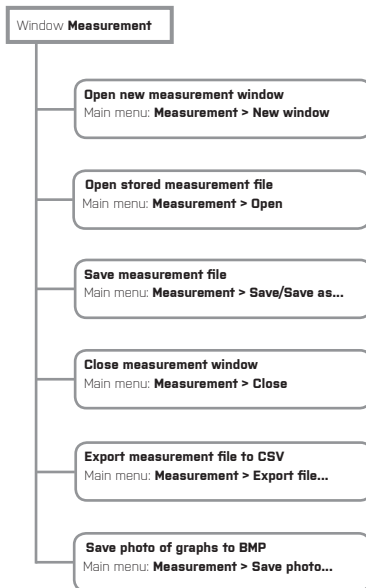


Connection modes:

- **On-line**, represents a physical connection to an OM device.
- **Off-line**, serves for projection of instrument menu and its configuration for later use in the on-line mode.
- **Mathematic**, represents a mathematical operation with measured data acquired from other connections (on-line)
- **Line tapping**, serves to analyse communication in progress among autonomous measuring systems

## MEASUREMENT MANAGER

Measurement manager facilitates creating and cancelling measurement files, graphs and individual data, provides their structured overview and enables modification of graph and value parameters.



## WINDOW MEASUREMENT

Window Measurement provides view of historic and current process of measuring certain quantities and their groups. The window offers three possible modes of viewing the measured data:

- 1) graphs - they reflect the historic course of measurement in selectable time Range. By means of the control panel in this mode it is possible to shift the displayed time period, modify the displayed time Range (from 1 sec up to 15 days) and set additional parameters of graph projection, (names, date on time axis).
- 2) Indicators – they show current values of the measured data
- 3) Table – depicts the history of the measuring process in table numeric format.

By means of the control panel in this mode it is possible to switch between the projection of interpolated values in particular time steps and the projection of truly taken sample values.

The graph and table modes also enable to discontinue the measurement in process and restart it again. At the same time it is also possible to specify whether upon restarting the process the measurement retains its former course (history) and the measurement is reassumed or whether it starts anew and the history is cancelled.

Values from the instrument may be added to the measurement e.g. from the Connection manager by selecting certain instrument channel from the on-line connection (or calculated connection or line tapping connection) and dragging it over to the Window Measurement. This way new values (quantities) may also be incorporated in already existing graphs (in case of graph mode), i.e. two quantities in one graph with common standard and time axis.

Structuring the quantities and graphs and changing their parameters (names, ranges, colors) may also be performed in Measurement Manager.

Time	DM 402PWR (COM3_30) / Channel 2	DM 602AV (COM3_20) / Channel 1
2010/01/14 08:23:18.400	87,1705	16,8704
2010/01/14 08:23:18.555	87,1705	16,8704
2010/01/14 08:23:18.602	87,1705	16,8704
2010/01/14 08:23:18.650	87,1705	16,8704
2010/01/14 08:23:18.743	87,185	16,1523
2010/01/14 08:23:18.821	87,185	19,424
2010/01/14 08:23:18.884	87,185	17,9629
2010/01/14 08:23:18.982	87,185	16,6853
2010/01/14 08:23:19.009	87,185	16,6853
2010/01/14 08:23:19.071	87,185	16,6853
2010/01/14 08:23:19.119	87,185	16,6853
2010/01/14 08:23:19.180	87,1822	15,5665
2010/01/14 08:23:19.227	87,1822	14,4625
2010/01/14 08:23:19.305	87,1822	12,984
2010/01/14 08:23:19.368	87,1822	11,5229
2010/01/14 08:23:19.446	87,1822	9,69100
2010/01/14 08:23:19.509	87,1822	7,88235
2010/01/14 08:23:19.597	87,1822	5,67563
2010/01/14 08:23:19.634	87,1822	3,32057
2010/01/14 08:23:19.636	87,1822	3,54333
2010/01/14 08:23:19.743	87,1822	5,31028
2010/01/14 08:23:19.805	87,1822	6,63017
2010/01/14 08:23:19.852	87,1822	7,95916
2010/01/14 08:23:19.915	87,1822	9,38384
2010/01/14 08:23:19.977	87,1822	11,048
2010/01/14 08:23:20.055	87,1822	12,9129
2010/01/14 08:23:20.118	87,1822	14,2593
2010/01/14 08:23:20.196	87,1822	15,7098
2010/01/14 08:23:20.259	87,1822	17,2653
2010/01/14 08:23:20.321	87,1822	18,9268
2010/01/14 08:23:20.388	87,1822	20,6943
2010/01/14 08:23:20.430	87,1822	22,5678
2010/01/14 08:23:20.477	87,1822	24,5483
2010/01/14 08:23:20.540	87,1822	26,6358
2010/01/14 08:23:20.597	87,1822	28,8303
2010/01/14 08:23:20.665	87,1822	31,1318
2010/01/14 08:23:20.727	87,1822	33,5403
2010/01/14 08:23:20.805	87,1822	36,0568
2010/01/14 08:23:20.869	87,1822	38,6813
2010/01/14 08:23:20.946	87,1822	41,4148
2010/01/14 08:23:20.993	87,1822	44,2583
2010/01/14 08:23:21.055	87,1822	47,2118
2010/01/14 08:23:21.102	87,1822	50,2753

## DEVICE SETUP

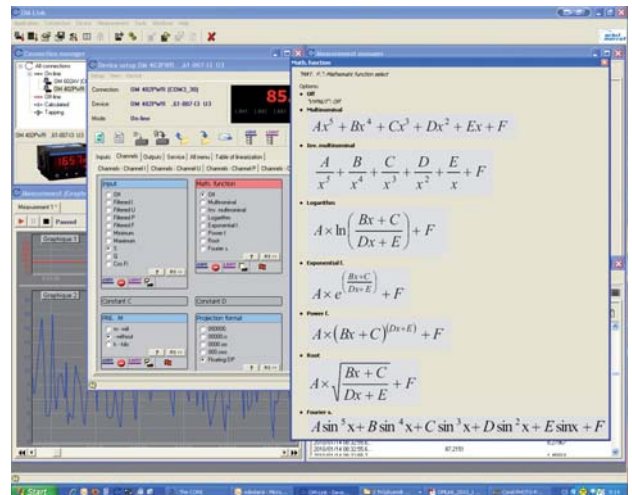
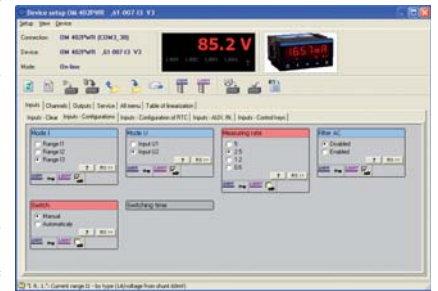
One of the main features of the DM Link program is the opportunity to set up the instruments comfortably from your computer.

- Setting the device values and parameters
- View of the complete setting menu (PROF/LIGHT/USER)
- Individual configuration of the complete menu
- Device setup export and import

All existing items may be set, even those that are inaccessible or blocked in the instrument.

In majority of the items on the instrument menu their attribute may be set for the "User menu" (see/change/ hide) and in addition it is possible to remove or add any item from the "LIGHT menu". Client menu of the instrument may be compiled eventually this way for given application and level of service proficiency.

Each setting of the device menu may be stored in a file and used for configuration of other instruments. An advantage is also the possibility of sending complete menu via e-mail directly to the technical support of the manufacturer.



In Properties and Service you will find complete information about the instrument

